



EUROGARD Overhead Action Shutters

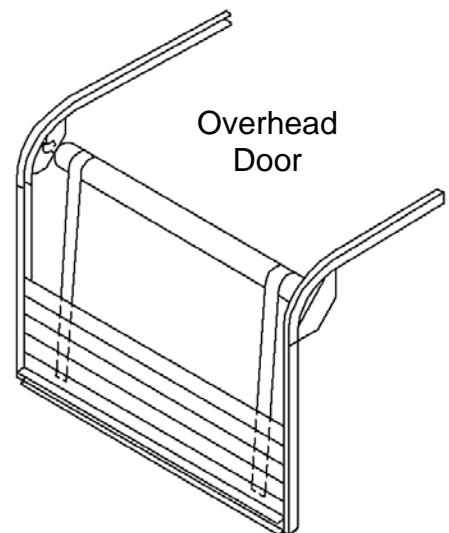
Euro Transport Manufacturing Ltd - Euroguard shutters are manufactured from high specification materials and each item is a precision made-to-measure unit. Attention to the following procedure will ensure correct operation of the product.

IMPORTANT:- THE SPRING BARREL/SHAFT ASSEMBLY OF ALL EUROGARD ROLLER SHUTTERS ARE SUPPLIED PRE-TENSIONED. ADJUSTMENT OF THE SPRINGING, THEREFORE CAN BE DANGEROUS AND SHOULD BE UNDERTAKEN ONLY BY PERSONNEL WHO HAVE PREVIOUS EXPERIENCE OF THIS OPERATION

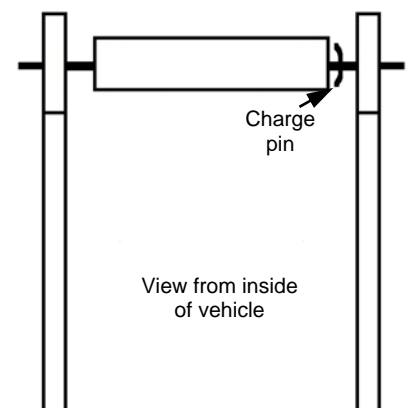
Fitting Instructions

1. Before proceeding, check that the dimensions stated on the advice note/shutter packaging are exactly the same as the submitted order. Any variation must be reported before attempting to install the shutter. Check the size of the opening against the dimensions given on the advice note/shutter packaging, also check that the opening is square by measuring diagonally across corners of the opening.

Fit channels and brackets into the aperture, ensuring that the channels are both square and parallel.

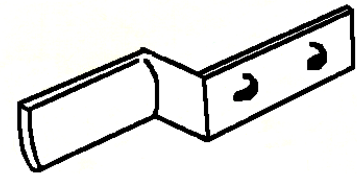


2. Remove spring assembly from the curtain by firstly unrolling the curtain, making sure that the surface on which the curtain is being unrolled is free from anything which may damage the curtain face. (DO NOT STAND ON THE CURTAIN). Separate the curtain from the spring assembly by disconnecting the split pins/bolts. The spring assembly should now be located/secured into the brackets with the cable, split pins/bolts provided. The charge pin must be fitted at the right hand side of the shutter when viewing from the inside of the curtain i.e. inside the vehicle. **DO NOT** at this stage attempt to remove the spring assembly charge pins.





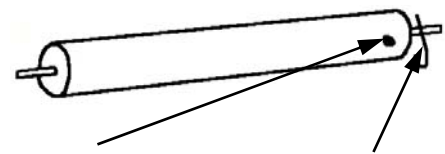
3. If necessary, remove the finger rail and bottom bar stops (if fitted). Working from the inside enter curtain, bottom rail first, into the channels and then re-fit the finger rail and (if fitted) the bottom bar stops. With the curtain in the closed position, connect curtain to spring assembly unit using cables, split pins/bolts provided, check for free movement of the curtain and ensure that the curtain is centrally positioned within the opening.



Bottom Bar Stop

4. Remove charge pin from spring assembly. The shutter should now be operational.

BARREL SPRINGING/ HELICAL TYPE

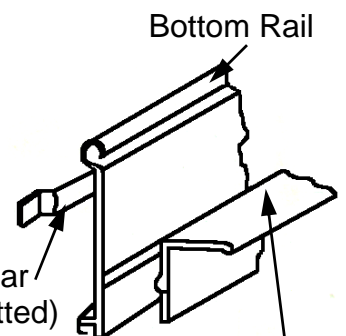
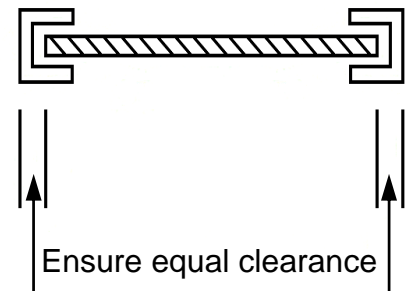


Charge Pin

SHOULD ANY FINE ADJUSTMENT BE NECESSARY, PLEASE NOTE THE FOLLOWING:

BARREL SPRINGING/HELICAL TYPE

1. With the shutter in the halfway position.
2. Release ONE CABLE ONLY at the curtain connection point.
3. To release tension unwind 1 turn of cable off the barrel and reconnect the cable to the curtain.
4. Repeat for the other cable.
5. To increase tension repeat operations 1 and 2 above and by pulling on the fixed cable ensuring the barrel, not the curtain turns 1 full turn (assistance may be required). Wind the free cable one extra turn around the barrel and re-connect to the curtain.



Finger Rail

Then repeat for the other tape.

IMPORTANT NOTE.

BOTTOM BAR STOPS ARE LOOSE ITEMS AND ARE PACKED NEXT TO THE BARREL

OVERHEAD ACTION SHUTTERS

HEAD OFFICE & FACTORY

Units 1 & 3 Forest Mill. Burnley Road East.
Water, Rossendale Lancashire BB4 9PX
tel: 01706 26087. fax: 01706 230319